

Datasheet AMiS-X



Datasheet AMiS-X

Features

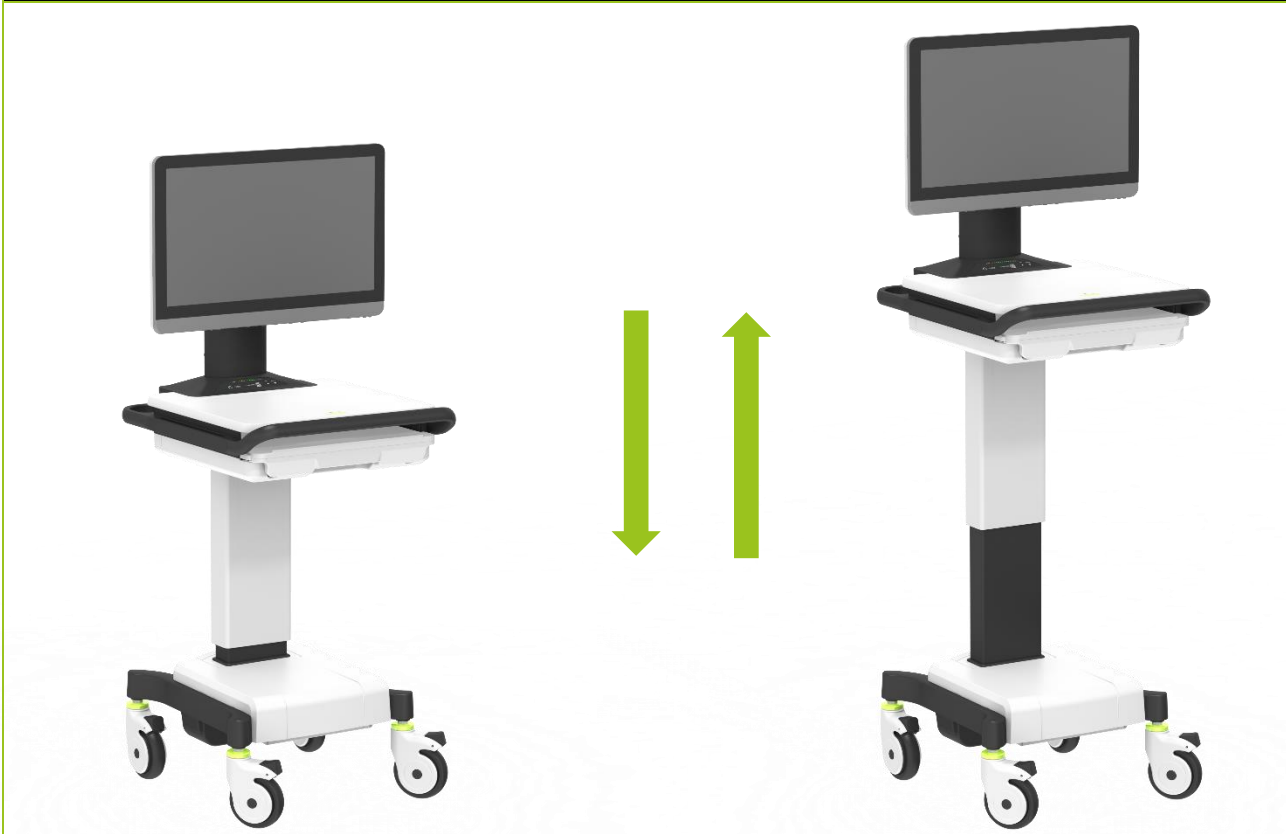
- Ergonomic design for ease of use, cleaning and mobility
- Designed for safety/ reliability/ easy maintenance
- Efficient Total Cost of Ownership (TCO)
- Medical approved (EN60601-1)
- Wide range of accessories available



Specifications	
Footprint	W 420 x L 440 mm
Work surface	W 470 x L 520 mm
	Weight capacity: up to 35 lbs/16 kg
Workspace height	86 - 116 cm
Keyboard height	80 - 110 cm
Castors	Ø 125 mm anti-static castors (2 with brake)
	Optional: Lockable direction castors
Keyboard tray	Keyboard size: up to 380 x 140 x 25 mm
	Equipped with keyboard light
	Extendable to front
	Optional: Wrist comfort
Mouse pad	Extendable to left and right
DIN-rail	Left and right side 30 x 10 mm / rear 25 x 10 mm
Monitor	Mounting VESA 75/100
	Rotation Revolve 180° and tilt 190°
Outputs	4x USB, 5V (in monitor neck)
	2x USB in front (for keyboard and mouse)
	1x LAN RJ45 (in monitor neck)
Dashboard	Power supply button
	LED power button
	LED fuel gauge
	Height adjustment (lower/higher) buttons (if electrical height adjustment)
Certification	Certification EN60601 - 1, CCC, CE, FCC Class B
	Vibration EN60601 - 1
Nett weight	39 kg / 86 lbs

Packing information	
Size of box	720 x 640 x 1560 mm
Gross weight (inc. iPS-system)	54 kg / 119 lbs

Dimensions



Power system

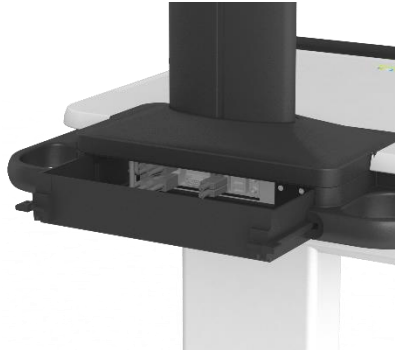
	iPS-M420S-Li Fanless	iPS-M210S-Li Fanless
Battery capacity	420 Wh	210 Wh
Power input	100 - 240 V, 50 - 60 Hz, AC input	100 - 240 V, 50 - 60 Hz, max 4,5 A, AC input
Battery type	Li ion (Lithium-ion)	Li ion (Lithium-ion)
Battery runtime	> 10 hours (depends on System configuration and usage)	> 5 hours (depends on System configuration and usage)
Battery charge time	Approximately 3 hours	Approximately 1,5 hours
Battery lifetime	DOD 80%, 2000 cycles	DOD 80%, 1000 cycles
Dimensions	282 x 258 x 100 mm (11.1" x 10.2" x 3.9")	282 x 258 x 100 mm (11.1" x 10.2" x 3.9")
Certifications	CE, FCC Class B	CE, FCC Class B
Nett weight	8,8 kg / 18 lbs	7,3 kg / 15 lbs

Feature details

1



2



3



4



5



- | | |
|---|---|
| 1 | Overview of the work surface, keyboard and mouse |
| 2 | PC tray for using an internal computer |
| 3 | Manual height adjustment with gas spring |
| 4 | Dashboard with buttons for electrical height adjustment |
| 5 | External easy access USB-inputs |